

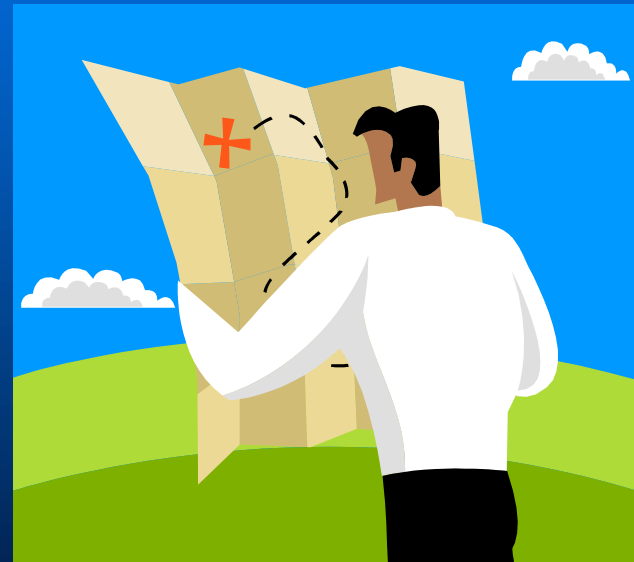
# **Managing Hazardous Pharmaceutical Waste**

**David A. Young, Pharm.D.**

**Director, Pharmacy Services  
Albert Einstein Medical Center**

# Overview

- **How AEMC got started**
- **Current AEMC program**
- **Challenges**
- **Next steps**

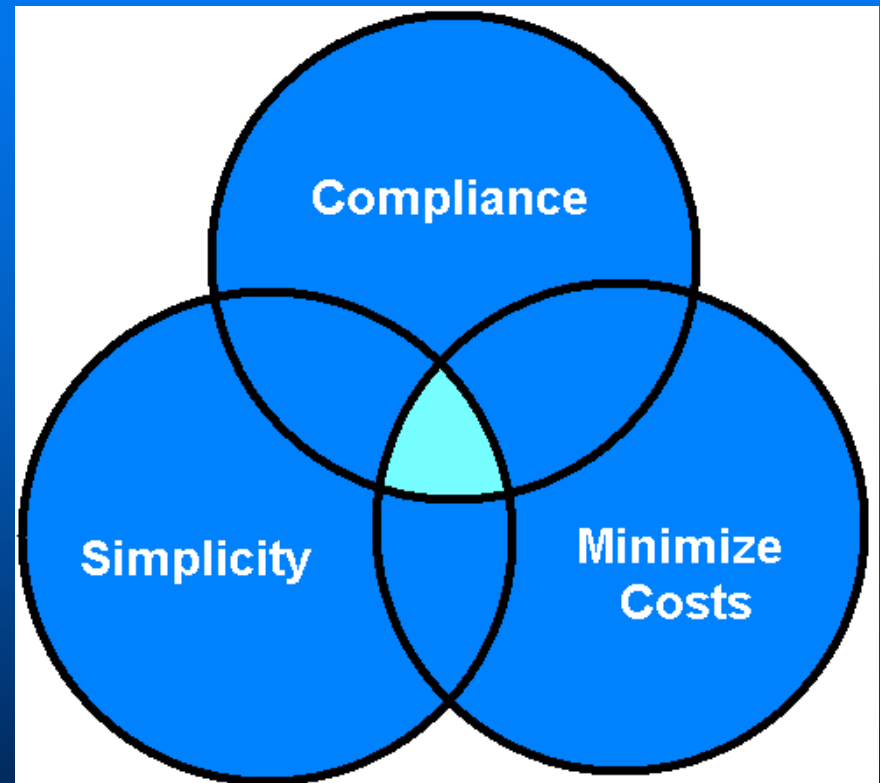


# The Beginning

- **Notification by Environmental Services and Network Safety**
- **Workgroup formed**
  - **Current waste disposal state**
- **Contracted with outside vendor**
  - **Waste profile**
  - **Facility assessment**
  - **Waste management/removal**

# The Beginning

- **Established goals**
  - Establish compliance
  - Keep it simple
  - Minimize costs
- **Implementation plan**
  - Pharmacy first
  - Chemo areas
  - Critical care
  - Facility wide



# Current Program

- **All pharmacy satellites at main campus**
- **Oncology patient care areas**
  - **Send container to non-oncology areas**
- **Supplies ordered from storeroom**
- **Black bins removed by certified vendor**

# Challenges: Implementation

- **Initiation**
  - Understanding the scope
  - Projecting the impact
  - Planning for total compliance
- **Educational**
  - Concept vs. practice
  - Devil is in the details
  - Pharmacy vs. end users

# Challenges: Operational

- **Keeping it simple**
  - No differentiation between P, U, D lists
  - Stickers on every container
  - Yellow is gone
- **Staff compliance**
  - Over compliance and under compliance
- **Coordination**
  - Supplies
  - Removal from pharmacy areas

# Challenges: Financial

- **Start up costs**
- **Removal/disposal expenses**
- **Simplicity costs more**
- **Approx. \$185,000 over first 12 months**
  - **Waste reduction strategies**
  - **Slowed the timeline**
  - **Change implementation plan?**

# Next Steps

- **Critical care roll out**
- **Revising implementation plan**
  - **Rx implementation at all campuses**
  - **All patient care areas at each campus**
- **Budgeting process**
- **Continuous education**